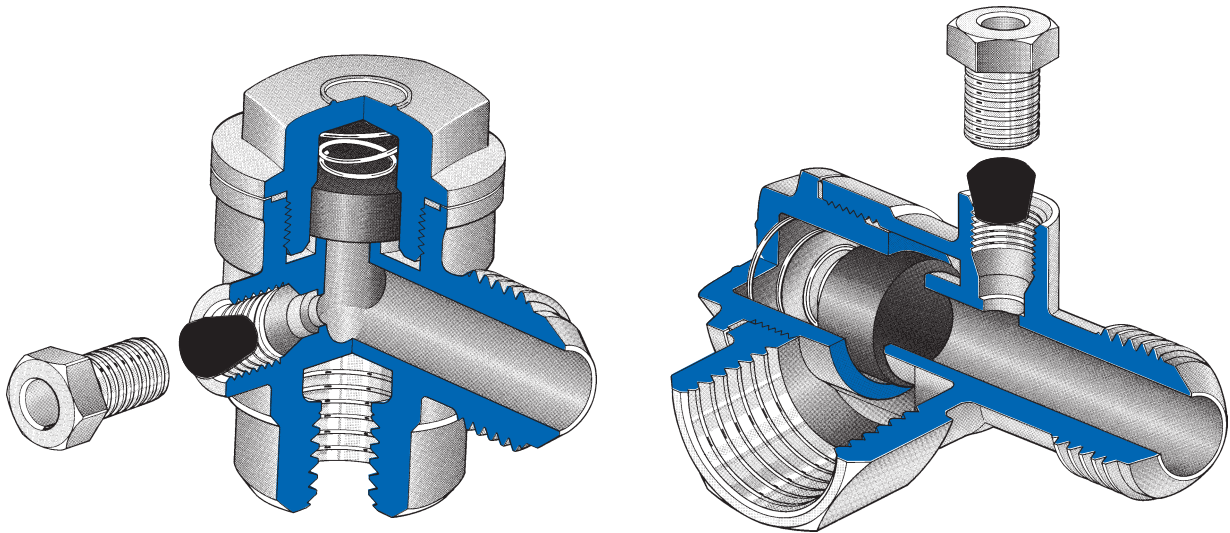


VALVOLE DI RITEGNO

CHECK VALVES - NON RETURN VALVES
SOUPAPE DE RETENUE

RUCKSCHLAGVENTILE
VALVULAS DE RETENCIÓN



CARATTERISTICHE TECNICHE

CAMPI DI IMPIEGO: Le valvole di ritegno sono ottimali per i costruttori di compressori d'aria. Per rispondere alle esigenze del mercato, le valvole di ritegno sono prodotte nelle versioni orizzontali e verticali. Le caratteristiche tecniche ed i materiali impiegati garantiscono un elevato grado di affidabilità e di resistenza alle alte temperature pneumatiche a cui vengono sottoposte.

Prove di laboratorio sono state effettuate sulle valvole di ritegno dall'ISTITUTO AUTORIZZATO-CERTIFICATO DI PROVA N° 4714.

Le tabelle riportanti i valori di prova sono disponibili presso la nostra sede.

MATERIALI IMPIEGATI:

CORPO/TAPPO: Ottone UNI EN 12164 CW 614N. Ottone UNI EN 12165 CW 617N.

ELEMENTO DI TENUTA: VITON - 90 Shore. Temperatura di esercizio della pastiglia -10°C / +200°C.

NBR - Gomma anticalore - antiolio -90 Shore. Temperatura di esercizio della pastiglia -20°C / +90°C.

MOLLE: ACCIAIO INOX - AISI 302.

GUARNIZIONE TENUTA CORPO/TAPPO: ALLUMINIO ricotto oppure OR in NBR resistenza temperatura -20°C/ +100°C.

TRATTAMENTO SUPERFICIALE: Nichelatura.

FILETTATURA: Gas conica ISO 7(BSPT) -DIN 2999 - BS 21.

Su ogni singola valvola di ritegno è stampata la sigla: QFL (logo produttore). OT58: ottone UNI EN 12164 CW614N.

PRESSIONE NOMINALE: 16 BAR.

I prodotti sono conformi alla direttiva 2002/95/EC -RoHS-

TECHNICAL FEATURES

FIELDS OF APPLICATION: Non-return valves are successfully used in air compressors. Horizontal and vertical versions are available to meet all market requirements. Technical specification and the top quality of materials used, guarantee high reliability and resistance to high pneumatic temperatures.

Laboratory tests were performed on the non-return valves by the AUTHORIZED INSTITUTE. TEST CERTIFICATE N° 4714.

The tables showing values obtained are available at our head office.

MATERIALS USED:

BODY/CAP: Brass UNI EN 12164 CW 614N. Brass UNI EN 12165 CW 617N.

SEALING ELEMENT: VITON - 90 Shore. Pastille working temperature -10°C / +200°C.

NBR - heat - and oil - proof rubber - 90 Shore. Pastille working temperature -20°C / +90°C.

SPRINGS: AISI 302 stainless steel.

BODY/CAP SEAL: Annealed aluminium, or NBR o-ring resistant to -20°C / +100°C.

SURFACE TREATMENT: Nickel plating.

THREAD: Conical gas ISO 7 (BSPT) - DIN 2999 - BS 21.

Each non-return valve comes with the following engravings: QFL (Manufacturer's logo). OT58: Brass UNI EN 12164 CW614N.

NOMINAL PRESSURE: 16 BAR.

Products in conformity with the directive 2002/95/EC -RoHS-

CARACTERISTIQUES TECHNIQUES

DOMAINES D'APPLICATION: Les soupapes de retenue trouvent leur application optimale dans les compresseurs à air. Pour satisfaire les différentes exigences du marché, elles sont disponibles dans les versions horizontales et verticales. Grâce à leurs caractéristiques techniques et aux matières utilisées, ces soupapes donnent une garantie de haute fiabilité et résistance aux températures élevées des systèmes pneumatiques. Des essais en laboratoire ont été effectués sur les soupapes de retenue par l' INSTITUT AGREE. CERTIFICAT D'ESSAI N° 4714. Les tableaux reportent les valeurs qui sont disponibles à notre siège.

MATERIELS DES COMPOSANTS:

CORPS/BOUCHON: Laiton UNI EN 12164 CW 614N. Laiton UNI EN 12165 CW 617N.

ELEMENT D'ETANCHEITE: VITON - 90 Shore. Température de service du disque -10°C / +200°C ou bague OR en NBR résistant à la chaleur aux huiles - 90 Shore. Température de service du disque -20°C / +90°C.

RESSORTS: Acier inox - AISI 302.

JOINT D'ETANCHEITE CORPS / BOUCHON: Aluminium recuit en bague OR en NBR - résistance à la température de -20°C / +100°C.

FINITION: Nickelage.

FILETAGE: Gaz conique - ISO 7 (BSPT) - DIN 2999 - BS 21.

Chaque soupape de retenue est livrée avec les estampillages suivants: QFL (Marque du fabricant). OT58: Laiton UNI EN 12164 CW 614N.

PRESSION NOMINALE: 16 BAR.

Produits en conformité avec la directive -RoHS- 2002/95/EC

TECHNISCHE MERKMALE

ANWENDUNGSGEBIET: Rückschlagventile sind für die Hersteller von Luftverdichtern optimal. Um der Marktnachfrage voll zu genügen, werden unsere Rückschlagventile in horizontaler und vertikaler Ausführung gebaut. Ihre technische Merkmale und die zu ihrer Fertigung verwendeten Werkstoffe gewährleisten ihre Sicherheit und Druckfestigkeit selbst bei hohen Temperaturen.

Unsere Rückschlagventile wurden von dem BEVOLLMÄCHTIGTEN INSTITUT Laboruntersuchungen unterzogen. UNTERSUCHUNGSBE-SCHIEINIEGUNG N. 4714. Die Tabelle mit den entsprechenden Werten können bei uns eingesehen werden.

VERWENDETE MATERIALEN:

KÖRPER/VERSCHLUß: Messing UNI EN 12164 CW 614N. Messing UNI EN 12165 CW 617N.

ABDICHTUNG: VITON - 90 SHORE. Betriebstemperatur der Dichtungsscheibe -10°C / +200°C oder NBR - hitze - und ölbeständiger Gummi - 90 SHORE - Betriebstemperatur der Dichtungsscheibe -20°C / +90°C.

FEDER: AISI 302 Edelstahl.

DICHTUNG KÖRPER/VERSCHLUß: Geglühtes Aluminium bzw. O-Ring aus NBR bis -20°C + 100°C hitzebeständig.

OBERFLÄCHENBEHANDLUNG: Vernickelt.

GEWINDE: Konisches Gasgewinde ISO 7 (BSPT)- DIN 2999 - BS 21

Jedes Ventil wird wie folgt beschriftet: QFL (Herstellerzeichen). OT 58: Messing UNI EN 12164 CW 614N.

DRUCKBEREICH: Nennndruck: 16 BAR.

Die produkte entsprechen der Richtlinie 2002/95/EC -RoHS-

CARACTERISTICAS TECNICAS

CAMPOS DE EMPLEO: Las válvulas de retención son optimas para los fabricantes de compresores de aire. Para hacer frente a las exigencias del mercado, las válvulas de retención se fabrican en las versiones horizontal y vertical. Las características técnicas y los materiales utilizados garantizan un alto grado de fiabilidad y de resistencia a las altas temperaturas neumáticas a que vienen sometidas.

Sen han efectuado pruebas de laboratorio en las válvulas de retención por el INSTITUTO AUTORIZADO, CERTIFICADO DE PRUEBA N. 4714. Tabla de los valores disponibles en nuestro establecimiento.

MATERIAL EMPLEADO:

CUERPO/TAPÓN: Láton UNI EN 12164 CW 614N. Láton UNI EN 12165 CW 617N.

ELEMENTO DE ESTANQUEIDAD: VITON - 90 Shore. Temperatura de trabajo de la pastilla: -10°C /+200°C o NBR - Goma anticolor, anti-aceite - 90 Shore - Temperatura de trabajo de la pastilla -20°C /+90°C.

MUELLES: Acero inox - AISI 302.

JUNTAS ESTANQUEIDAD CUERPO/TAPÓN:

ALUMINIO recocido o bien OR de NBR, resistencia temperatura -20°C / +100°C.

TRATAMIENTO SUPERFICIAL: Niquelado.

ROSCAS: Gas cónica ISO 7 (BSPT)- DIN 2999 - BS 21.

En cada válvula de retención esta sellada la sigla siguiente: QFL (sigla fabricante). OT58: Láton UNI EN 12164 CW 614N.

PRESIÓN NOMINAL: 16 BAR.

Productos de conformidad a la Directiva -RoHS- 2002/95/EC

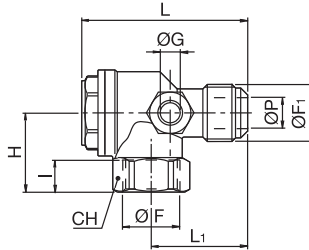
VALVOLE DI RITEGNO

CHECK VALVES - NON RETURN VALVES

VALVOLA ORIZZONTALE F.M.
NON RETURN VALVE F.M. HORIZONTAL

1000

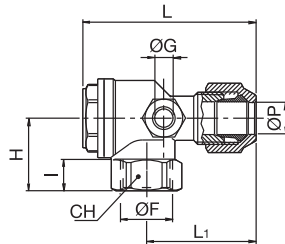
ARTICOLO	F	F1	P	I	G	H	L	L1	CH	Q	M	A
10002900	3/8	3/8	9	11	6	23	48,5	28	20	Q15	M15	OR2075
10003900	1/2	1/2	11	12,5	6	27	62	36	26	Q20	M15	A15



VALVOLA ORIZZONTALE F. CON BICONO
NON RETURN VALVE F. HORIZONTAL WITH NUT

1020

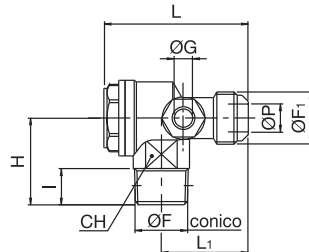
ARTICOLO	F	P	I	G	H	L	L1	CH	Q	M	A
10202200	3/8	8	11	6	23	57,5	37,5	20	Q10	M15	OR2075
10202210	3/8	10	11	6	23	55,5	35,5	20	Q10	M15	OR2075
10202280	1/2	12	12,5	6	27	70,5	45,5	26	Q20	M20	A15
10202290	1/2	14	12,5	6	27	70,5	45,5	26	Q20	M20	A15
10202300	1/2	15	12,5	6	27	70,5	45,5	26	Q20	M20	A15



VALVOLA ORIZZONTALE M.M.
NON RETURN VALVE M.M. HORIZONTAL

1200

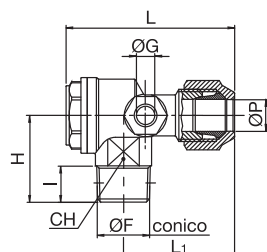
ARTICOLO	F	F1	P	I	G	H	L	L1	CH	Q	M	A
12002900	3/8	3/8	9	11	6	27,5	47,5	30	19	Q10	M15	OR2068
12003800	1/2	3/8	9	12,5	6	30	49	28,5	22	Q10	M15	OR2075
12003900	1/2	1/2	11	12,5	6	30	60,5	37,5	22	Q20	M20	A15
12004800	3/4	1/2	11	12	6	32	60,5	35	28	Q20	M20	A15



VALVOLA ORIZZONTALE M. CON BICONO
NON RETURN VALVE M. HORIZONTAL WITH NUT

1220

ARTICOLO	F	P	I	G	H	L	L1	CH	Q	M	A
12202200	3/8	8	11	6	26,5	58	40	19	Q10	M15	OR2068
12202210	3/8	10	11	6	26,5	55	37	19	Q10	M15	OR2068
12202270	1/2	10	12,5	6	30	57	36	22	Q10	M15	OR2075
12202281	1/2	12	12,5	6	30	59,5	38,5	22	Q10	M15	OR2075
12202290	1/2	14	12,5	6	31	68,5	46	22	Q20	M20	A15
12202300	1/2	15	12,5	6	31	71	48,5	22	Q20	M20	A15
12202360	3/4	12	12	6	32	69	44	28	Q20	M20	A15
12202370	3/4	14	12	6	32	69,5	44,5	28	Q20	M20	A15
12202380	3/4	15	12	6	32	70,5	45,5	28	Q20	M20	A15

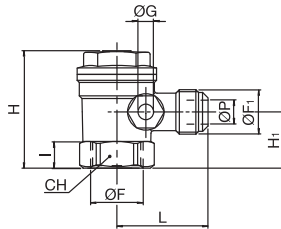


VALVOLE DI RITEGNO

CHECK VALVES - NON RETURN VALVES

VALVOLA VERTICALE F.M.
NON RETURN VALVE F.M. VERTICAL

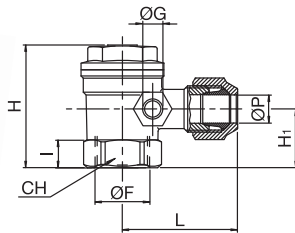
1400



ARTICOLO	F	F1	P	I	G	H	H1	L	CH	Q	M	A
14003800	1/2	3/8	9	11	6	44,5	21,5	34	25	Q15	M15	A15
14003900	1/2	1/2	11	12,5	6	53,5	25	37	27	Q25	M25	A25
14004800	3/4	1/2	11	12	6	56,5	26,5	39,5	32	Q25	M25	A25
14004900	3/4	3/4	14	12	6	56,5	26,5	39,5	32	Q25	M25	A25

VALVOLA VERTICALE F. CON BICONO
NON RETURN VALVE F. VERTICAL WITH NUT

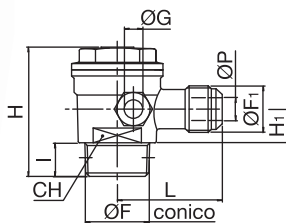
1420



ARTICOLO	F	P	I	G	H	H1	L	CH	Q	M	A
14202270	1/2	10	12,5	6	44,5	21,5	41	25	Q15	M15	A15

VALVOLA VERTICALE M.M.
NON RETURN VALVE M.M. VERTICAL

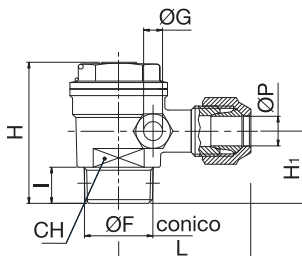
1600



ARTICOLO	F	F1	P	I	G	H	H1	L	CH	Q	M	A
16003800	1/2	3/8	9	12,5	6	47,5	12	34	26	Q15	M15	A15
16004800	3/4	1/2	11	13,5	6	55	13,5	36	33	Q25	M25	A25
16005800	1"	3/4	15	16	6	67	16	45	43	Q30	M30	A30

VALVOLA VERTICALE M. CON BICONO
NON RETURN VALVE M. VERTICAL WITH NUT

1620



ARTICOLO	F	P	I	G	H	H1	L	CH	Q	M	A
16202270	1/2	10	12,5	6	48	12	42	26	Q15	M15	A15
16202360	3/4	12	13,5	6	55	13,5	46,5	33	Q25	M25	A25
16202370	3/4	14	13,5	6	55	13,5	47	33	Q25	M25	A25
16202380	3/4	15	13,5	6	55	13,5	48	33	Q25	M25	A25
16202450	1"	18	15	6	67	16	57	43	Q30	M30	A30

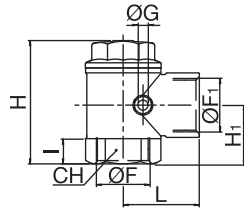
VALVOLE DI RITEGNO

CHECK VALVES - NON RETURN VALVES

VALVOLA VERTICALE F.F.
NON RETURN VALVE F.F. VERTICAL

1800

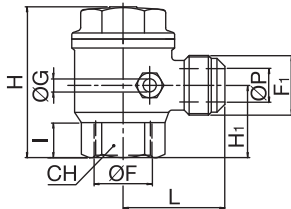
ARTICOLO	F	F1	I	G	H	H1	L	CH	Q	M	A
18005900	1"	1"	15	6	73	35,5	46,5	40	Q30	M30	A30



VALVOLA VERTICALE F.M. PESANTE
NON RETURN VALVE F.M. VERTICAL HEAVY

1900

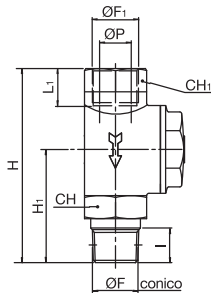
ARTICOLO	F	F1	P	I	G	H	H1	L	CH	Q	M	A
19004900	3/4"	3/4"	15	14,5	6	68	32	45	33	Q30	M30	A30



VALVOLA IN LINEA M.F.
LINE VALVE M.F.

1950

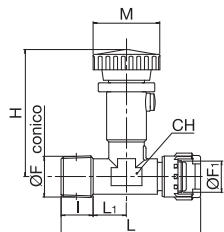
ARTICOLO	F	F1	P	I	L1	H	H1	CH	CH1	Q	M	A
19503900	1/2"	1/2"	14	15	18	84	49	27	27	Q25	M25	A40



VALVOLA TARATURA-GHIERA
CALIBRATION VALVE-MILLED NUT

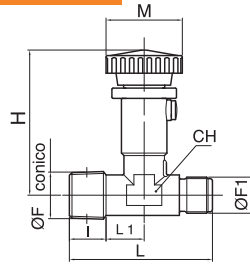
2000

ARTICOLO	F	F1	I	H	L	L1	CH	M
20002800	3/8"	1/4"	11,5	44	50,5	12	17	26,5



VALVOLA TARATURA
CALIBRATION VALVE

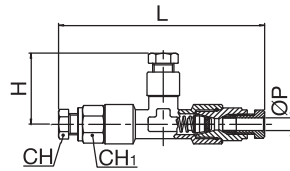
2020



ARTICOLO	F	F1	I	H	L	L1	CH	M
20202800	3/8	1/4	11,5	44	50,5	12	17	26,5

VALVOLA UNIDIREZIONALE
ONE-WAY VALVE

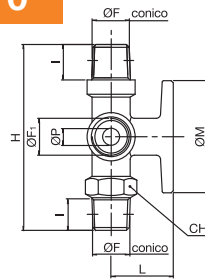
2050



ARTICOLO	P	H	L	CH	CH1
20507500	6	31	89	12	14

PORTAMANOMETRO FLANGIATO
FLANGED PRESSURE GAUGE COCK

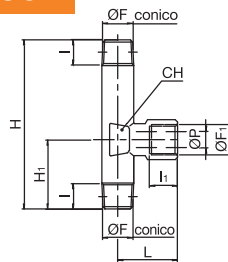
2070



ARTICOLO	F	F1	P	I	H	L	CH	M
20701900	1/4	1/4	6	11	64,5	21,5	17	39,5

PORTAMANOMETRO SEMPLICE
SIMPLE PRESSURE GAUGE COCK

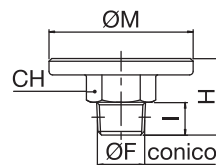
2090



ARTICOLO	F	F1	P	I	I1	H	H1	L	CH
20901900	1/4	1/4	7	11	11	72	42,5	25	14

FLANGIA CONTROLLO ANCC
CONTROL FLANGE ANCC

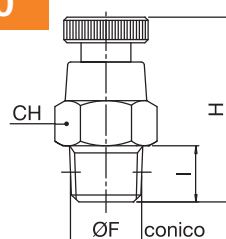
2100



ARTICOLO	F	I	H	CH	M
21001700	1/4	9	21	17	39

RUBINETTO SPURGO
DRAIN COCK

2150



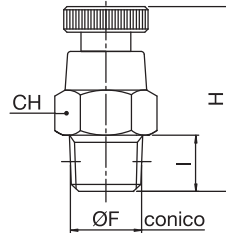
ARTICOLO	F	I	H	CH
21500800	1/8	8	28	14
21501700	1/4	9	27	14
21502600	3/8	9	24	17

VALVOLE DI RITEGNO

CHECK VALVES - NON RETURN VALVES

**RUBINETTO
SPURGO CON OR VITON**
DRAIN COCK WITH O-RING VITON

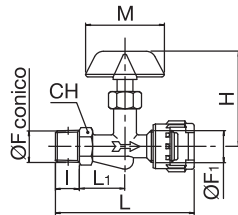
2150V



ARTICOLO	F	I	H	CH
21500800V	1/8	8	28	14
21501700V	1/4	9	27	14
21502600V	3/8	9	24	17

**RUBINETTO
SPILLO - LEVETTA - GHIERA**
LINE TAP - LEVER - MILLED NUT

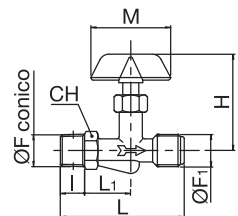
2200



ARTICOLO	F	F1	I	H	L	L1	CH	M	LEVETTA
22001000	1/8	1/4	9	37,5	46,5	16	13	34	PLASTICA
22001900	1/4	1/4	11	44	59,5	21	15	43	OTTONE
22001901	1/4	1/4	10,5	37,5	51	18,5	14	34	PLASTICA
22002800	3/8	1/4	11,5	44	59,5	20,5	15	43	OTTONE
22003700	1/2	1/4	12,5	44	63,5	23,5	22	43	OTTONE

**RUBINETTO
SPILLO - LEVETTA**
LINE TAP - LEVER

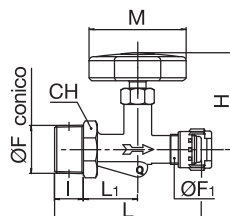
2240



ARTICOLO	F	F1	I	H	L	L1	CH	M	LEVETTA
22401000	1/8	1/4	9	37,5	46,5	16	13	34	PLASTICA
22401900	1/4	1/4	11	44	59,5	21	15	43	OTTONE
22401901	1/4	1/4	10,5	37,5	51	18,5	14	34	PLASTICA
22402800	3/8	1/4	11,5	44	59,5	20,5	15	43	OTTONE
22403700	1/2	1/4	12,5	44	63,5	23,5	22	43	OTTONE

**RUBINETTO
SPILLO - VOLANTINO - GHIERA**
LINE TAP - HANDWHEEL - MILLED NUT

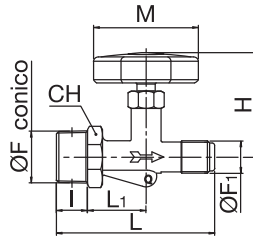
2260



ARTICOLO	F	F1	I	H	L	L1	CH	M
22601900	1/4	1/4	11	44,5	59,5	21	15	45
22602800	3/8	1/4	11,5	44,5	59,5	20,5	15	45
22603700	1/2	1/4	12,5	44,5	63,5	23,5	22	45

**RUBINETTO
SPILLO - VOLANTINO**
LINE TAP - HANDWHEEL

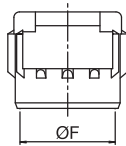
2300



ARTICOLO	F	F1	I	H	L	L1	CH	M
23001900	1/4	1/4	11	44,5	59,5	21	15	45
23002800	3/8	1/4	11,5	44,5	59,5	20,5	15	45
23003700	1/2	1/4	12,5	44,5	63,5	23,5	22	45

GHIERA
MILLED NUT

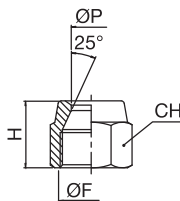
2310



ARTICOLO	F
23101700	1/4

DADO PER BICONO
BLOCKING NUT

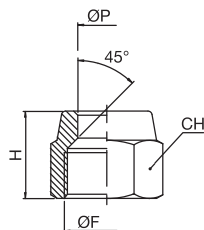
2400



ARTICOLO	F	P	H	CH
24002210	3/8	10	16	19
24002220	3/8	12	18,5	19
24002280	1/2	12	22	24
24002290	1/2	14	21	24
24002300	1/2	15	21	24
24002390	3/4	16	24	30
24002400	3/4	18	24	30

**DADO BLOCCAGGIO
BORDATO PER TUBI RAME**
BLOCKING NUT FOR COPPER TUBE

2420



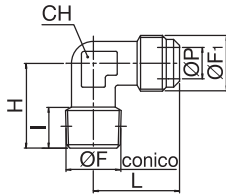
ARTICOLO	F	P	H	CH
24202210	3/8	10	16	19
24202220	3/8	12	16	19
24202280	1/2	12	20	24
24202290	1/2	14	20	24
24202300	1/2	15	20	24
24202310	1/2	16	20	24
24202390	3/4	16	23	30
24202400	3/4	18	23	30
24202420	3/4	20	23	30

VALVOLE DI RITEGNO

CHECK VALVES - NON RETURN VALVES

**RACCORDO L MASCHIO
SMUSSO 45°**
ELBOW MALE BEVEL 45°

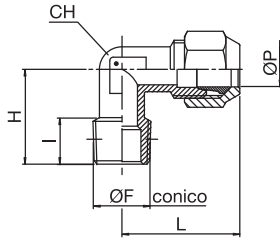
2430



ARTICOLO	F	F1	P	I	H	L	CH
24302900	3/8	3/8	9	11,5	27	27	14
24303800	1/2	3/8	9	14	28	28	17
24303900	1/2	1/2	11	14	28	28	17

**RACCORDO L MASCHIO
SMUSSO 45° CON BICONO**
ELBOW MALE BEVEL 45° WITH NUT

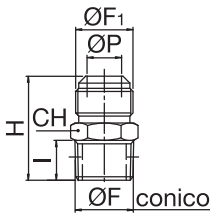
2435



ARTICOLO	F	P	I	H	L	CH
24352210	3/8	10	11,5	27	34,5	14
24352220	3/8	12	11,5	27	38	14
24352270	1/2	10	14	28,5	40	17
24352280	1/2	12	14	28,5	42	17
24352290	1/2	14	14	30	43	17
24352300	1/2	15	14	30	43	17

NIPPO MASCHIO SMUSSO 45°
NIPPLE MALE BEVEL 45°
FOR COPPER PIPE

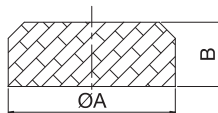
2450



ARTICOLO	F	P	I	H	L	CH
24502900	3/8	3/8	9	11,5	30	17
24503800	1/2	3/8	9	11,5	33	22
24503900	1/2	1/2	11	14	35,5	22
24504900	3/4	3/4	16	16	41,5	27

**PASTIGLIA VALVOLA
RITEGNO**
SEAL NON RETURN VALVE

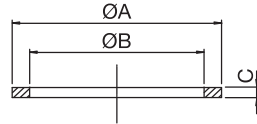
Q



ARTICOLO	A	B	MATERIALE
Q10	15	8,5	NBR
*Q10	15	8,5	VITON
Q15	15,5	6,5	NBR
*Q15	15,5	6,5	VITON
Q20	17	9	VITON
Q25	20,5	8	VITON
Q30	26	10	VITON

GUARNIZIONI - ALLUMINIO - OR VALVOLA RITEGNO
GASKET - ALUMINIUM - O-RING
NON RETURN VALVE

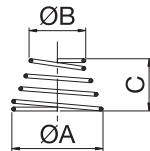
A



ARTICOLO	A	B	C
A15	27	24	1
A25	33,5	30,4	1,5
A30	43	38,3	1
A40	36	32,3	1
OR2068	20,73	17,17	1,78
OR2075	22,33	18,77	1,78

MOLLA PER VALVOLA RITEGNO - TARATURA UNIDIREZIONALE
SPRING FOR NON RETURN VALVE - CALIBRATION - ONE WAY VALVE

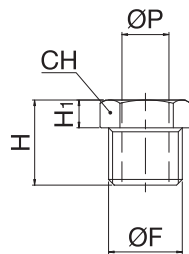
M



ARTICOLO	A	B	C
M15	16,3	10	9,5
M20	18,2	11,5	16
M25	21,8	11,5	11,5
M30	27,2	14	15
M45	8	8	21
M50	7,5	7,5	29,5

PREMIBICONO
PRESS OLIVE

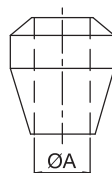
PRE



ARTICOLO	F	P	H	H1	CH
PRE08	1/8	6	13	4,5	12
PRE09	1/4	8	16	5	14

BICONO
BICONE/OLIVE

BI



ARTICOLO	A
BI075	6
BI083	8
BI090	10
BI097	12
BI101	14
BI103	15
BI204	18